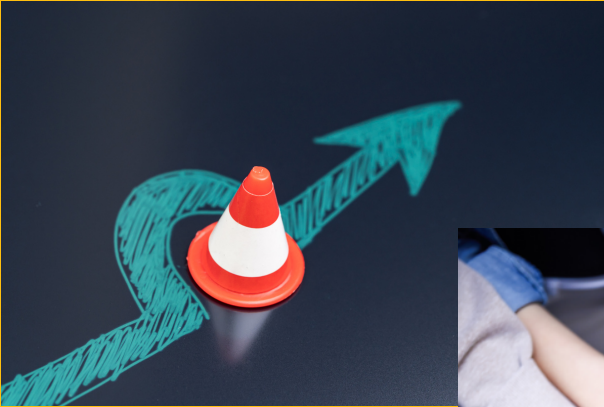


2022 PROFESSIONAL DEVELOPMENT OPPORTUNITIES



Every year the Maryland Association of Boards of Education (MABE) supports district leadership through a diverse selection of educational and training opportunities. MABE staff along with experienced practitioners provide relevant updates, in-depth discussions and timely learning for our members.

Unless otherwise indicated, each Board Service Academy is \$75 per attendee, which can be paid online at the time of registration.

MABE Board Service Academy details and related links may also be found [here](https://www.mabe.org/training/boardsmanship-academy-courses/) (www.mabe.org/training/boardsmanship-academy-courses/).

Academies will be held virtually until MABE determines it is safe to meet in person, at which point Academies will be held at MABE's office in Annapolis (621 Ridgely Avenue, Suite 300).



Questions can be directed to Molly Young at myoung@mabe.org.

JANUARY



NSBA Equity Symposium

\$225. Details available [here](#).



Adult New Board Member Orientation: Equipping Yourself for Success (MABE staff)

\$150 9:30 am - 3:00 pm (30-min lunch break)

Congratulations! You've been elected or appointed to your local school board and may be wondering, "Now what?" This is a crucial area where MABE's expertise can help! During these two days, you will learn the vital "ins and outs" of your important role; examine school law and policy that will impact your day-to-day work; learn about MABE's many practical resources that help you in your ongoing School Board efforts; and meet other new board members facing many of the same challenges you're encountering. This one is a can't-miss!

FEBRUARY



The Budget Process: Make Sure You're Prepared! (Milton Nagel)

\$75 9:30 am - 12:30 pm

One of the absolute most important and challenging functions of a school board involves school budget and finance. When districts are preparing their budgets, it is imperative for all members of the Board of Education to understand the budget process, know the school board's role in the process, and – importantly – know how to best communicate budget requests to their local appropriating body. You'll leave this practical session having gained helpful insights and how-tos about the budgeting process from MABE Deputy Executive Director Milton Nagel.



Successfully Building & Navigating the Superintendent-Board Relationship During Stressful Times (Molly Young)

\$75 9:30 am - 12:30 pm

You'll want to make this session a priority. The School Board and Superintendent have distinct and separate roles, and together they form the school system's much-needed leadership team. Their relationship can strain during challenging times – and today's ongoing political and pandemic-related hurdles only intensify this reality. During this timely session, you will learn how to create and foster trust; review both parties' roles and responsibilities; and practice pragmatic communications strategies sure to help during rocky times.



Successfully Building & Navigating the Superintendent-Board Relationship During Stressful Times (Molly Young)

\$75 9:30 am - 12:30 pm

You'll want to make this session a priority. The School Board and Superintendent have distinct and separate roles, and together they form the school system's much-needed leadership team. Their relationship can strain during challenging times – and today's ongoing political and pandemic-related hurdles only intensify this reality. During this timely session, you will learn how to create and foster trust; review both parties' roles and responsibilities; and practice pragmatic communication strategies sure to help during rocky times.

MARCH



School Boards Operating in a New Age: The Pressing Need for Vision and Accountability (Molly Young)

\$75 9:30 am - 12:30 pm

Vision and accountability are two of the key components of effective board governance, and neither has been more imperative than in today's turbulent climate. Establishing a clear vision with high expectations for quality learning supports strong student outcomes. This includes clear and specific goals to move a district forward, and being held accountable for these goals. Accountability depends on open decision making, community engagement and support, and receptivity to new ideas and constructive criticism. This Academy will feature best practices and discussion of unique challenges from your peers from around the state.



Crisis Communication How-Tos for Boards of Education (Jen Beltz)

\$75 9:30 am - 12:30 pm

School boards today are facing a range of threats that seem to increase each week, involving everything from social media firestorms, meeting protests and misconduct accusations, to contentious ballot issues and difficult labor union negotiations. When crises occur – or seem ready to crop up at any moment – stakeholders need to hear and be influenced by the Board's positions. Learn from MABE Communications Director Jen Beltz ways to frame and share your message in a diplomatic, time-sensitive and persuasive way.

APRIL



NSBA Annual Conference & Exposition, San Diego (MABE Staff)



The Board of Education Role in Community Engagement & Leadership (Molly Young)
\$75 9:30 am - 12:30 pm

The ultimate goal of community engagement is to focus the community on answering the question, "What must this community be like in order for all children to succeed?" Since community engagement is built on ongoing two-way communication between an organization and the community it serves, Boards are a step ahead when they view such engagement as a strategic, proactive opportunity to strengthen their school systems.

This important session will help you develop a better understanding of the public's expectations, and determine how parents, business people, and other members of the public can actively support the school system through effective engagement. By doing so, Board members empower themselves by increasing the effectiveness and impact of their everyday governance.

MAY



The Blueprint and Universal Pre-K (John Woolums)
\$75 9:30 am - 12:30 pm

The Blueprint for Maryland's Future Act mandates massive expansions of guaranteed access to high-quality pre-kindergarten for 3- and 4-year-olds in income-eligible families. Learn more about the law, the State's implementation plan, and challenges local Boards face in making room for new students, building partnerships with private providers, and communicating with families on the roll-out of these major reforms.



New Laws Passed in 2022 Affecting Your School System: Implications & Opportunities **(John Woolums and Debra Daniel)**

\$75 9:30 am - 12:30 pm

Legislative sessions move quickly and can be complicated. It can be difficult to keep up with decisions that impact local boards without legislative expertise in your corner. Here, MABE has you covered! This helpful session will provide you and your Board with all the latest legislative developments from Annapolis you need to have on your radar, and prepare you to act on these new laws through local board policies, programs, and services.

JUNE



Ethics: What You Most Need to Know **(Debra Daniel)**

\$75 9:30 am - 12:30 pm

Ask yourself this: Do you and your fellow board members always act ethically? There is often a fine line between good intentions and unethical behavior. During this useful workshop, you will learn needed information and context about Maryland's ethics laws; analyze related, real-life scenarios; and examine the consequences for failure to comply. Given the importance of meeting ethics requirements, you'll want to be sure to attend.



Governing for Equity **(Debra Daniel)**

\$75 9:30 am - 12:30 pm

The Maryland State Board of Education has mandated educational equity as a priority for all school systems in the State. In response, the MABE Educational Equity Committee has created a Workbook, "Leading for Educational Equity Through School Board Governance," to assist Maryland School Boards in focusing on educational equity as an integral part of its decision-making process. Through the use of the Workbook, this session will explain the relationship between equity and equality; how educational equity benefits all students; and how Boards can evaluate their decisions through an equity lens.

JULY



Boost Your Effective Governance With Stronger Board Self-Evaluations & Superintendent Evaluations (Molly Young)

\$75 9:30 am - 12:30 pm

Evaluations are essential tools to ensure effective Board Governance. Commitment to quality, excellence, continuous learning, and local control of the educational system all are demonstrated when Boards lead by example with thorough, well-thought-out evaluations. Board self-assessments provide more than just accountability and a framework for communication – they lay the foundation for your Board’s continuous improvement. A quality superintendent evaluation system serves as a link between the Board and the superintendent, clarifying expectations and establishing a means to provide professional feedback on performance.

This session will walk you through how to establish an organized process for delivering the best possible evaluations that strengthen your governance efforts.



The Blueprint and Reimagining College Readiness and CTE (John Woolums)

\$75 9:30 am - 12:30 pm

The Blueprint for Maryland’s Future Act calls for statewide curricular reforms, expert review teams advising on school-based practices, and the ambitious target that students are “college and career ready” by the end of 10th grade instead of 12th grade. This session will explore how the Blueprint redefines Career Technical Education (CTE) and demands expanded partnerships with community colleges and businesses.

AUGUST



Student New Board Member Orientation (MABE staff)

\$75 9:30 am - 2:30 pm (30-min lunch break)

Student Board Members have a unique opportunity to help shape the path of education on a local level and learn the basics of governance firsthand. MABE's Student New Board Orientation will assist in equipping you to make the biggest helpful impact in your school system, while helping you forge valuable connections with other student board members. During your resource-filled day with MABE, you will learn the "ins and outs" of your important role, meet your peers from throughout Maryland, and engage in timely discussions from a trusted student perspective.



The Open Meetings Act: Understanding its Significance, Avoiding Penalties & Ensuring School Board Compliance (Debra Daniel)

\$75 9:30 am - 12:30 pm

Maryland's Open Meeting Act is more complicated than just providing public notice of your meetings. This workshop will help you and your School Board colleagues by providing an in-depth overview of Maryland's Open Meetings Act, and discussing some of the cases and complaints that have come before the Open Meetings Compliance Board.

Maryland law now requires that at least one member of the Board be designated to receive training on the Open Meetings Act, and it is highly recommended that all members be familiar with the Act. MABE is one of only a few non-governmental entities that are allowed under Maryland law to provide this important training.

SEPTEMBER



Parliamentary Procedure: Maximizing Its Benefits & Rewards (Debra Daniel)

\$75 9:30 am - 12:30 pm

Learn from an experienced parliamentarian the best way to conduct your board meetings while still complying with Maryland law. If your board uses Robert's Rules of Order, this interactive and engaging session will provide you with a clear understanding of ways to use Parliamentary Procedure to make your board meetings even more efficient and productive.

OCTOBER



MABE Annual Conference 2022

Join your fellow board members from across the state at The Westin Annapolis for 2.5 days of engaging speakers, timely workshops, and active networking. (Registration, fees and lodging information TBA.)

DECEMBER



Adult New Board Member Orientation (MABE staff)

Congratulations! You've been elected or appointed to your local school board and may be wondering, "Now what?" This is a crucial area where MABE's expertise can help! During these two days, you will learn the vital "ins and outs" of your important role; examine school law and policy that will impact your day-to-day work; learn about MABE's many practical resources that help you in your ongoing School Board efforts; and meet other new board members facing many of the same challenges you're encountering. This one is a can't-miss!